

TABLE OF CONTENTS

	Page
Mission Statement	1
SCCC Music Programs.....	2
A.S. Performing Arts: Music	
A.A.S. Music Business	
Music Certificate	
Audition Information and Requirements.....	3-4
Ear Training and Sight Singing Preparation.....	5
Audition Requirements for Guitar and Bass.....	6-7
Musican’s Health	7
Private Lessons	8
Performance Concentration	
Applied Music	
Performance Concentration Syllabus.....	9-11
Performance Concentration: Division Recitals	12
Division Recital Form	13
Student Recital Guidelines	14
Performance Concentration: Annual Performance Exam	15
Voice Concentration	
SCCC Ensembles.....	16
Ensemble Requirement for Degree Students.....	17
Attire	
SCCC Instruments.....	17
Practice Rooms	17
Lockers.....	17
MIDI/Computer Music Lab and Piano Lab.....	18
School of Music Staff Directory	19
Curriculum Worksheets	
Performing Arts: Music	20-22
Music/Business	23-24
Music Certificate.....	25-26
Articulation Agreement with Nazareth College	27
Articulation Agreement with SUNY Fredonia	28



SCHOOL OF MUSIC

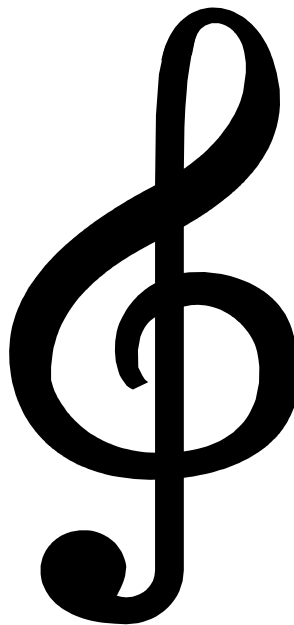
MISSION STATEMENT

The mission of the School of Music is to provide academic programs leading to graduation and transfer to baccalaureate schools of music and/or to careers in professions and vocations in music or music-related fields.

- Degree programs will provide the greatest possible ease for transfer to four-year college music programs.
- Exit credentials of degree program graduates will be of the highest level possible and practical.

The quality of degree programs will be supported by entrance standards and screening that ensure entering students music literacy, basic aural skills, and a performance foundation.

In addition, the School provides open enrollment coursework, such as that encompassed in the Music Certificate program, both for preparation for entrance into music degree programs and to develop personal musicianship.



SCCC MUSIC PROGRAMS

The School of Music offers three programs of study: the Associate in Science degree, **Performing Arts: Music**; the Associate in Applied Science degree, **Music Business**; and the **Certificate in Music**. The National Association of Schools of Music accredits all three programs.

A successful audition is required for entry into the A.S. and A.A.S. degree programs. Contact the School of Music for more information regarding audition requirements.

Students are responsible for knowing all requirements for their specific program and are urged to consult the College Catalog.

A.S. Performing Arts: Music Degree

The A.S. Performing Arts: Music curriculum is designed for students who intend to transfer to a baccalaureate program after graduation from SCCC. Areas of transfer may include music education, performance, music therapy, theory/composition, or jazz studies. A successful audition is required for entry into this program.

A.A.S. Music Audio Technology

The A.A.S. Music Audio Technology degree program provides rigorous training in basic musicianship, contemporary recording and reinforcement technologies, and management and legal responsibilities.

Music Certificate

The Certificate program is designed for student who wish to develop their musicianship and for those who wish to prepare for an audition for the A.S. and A.A.S. music degree programs. No audition is required for entry into the Music Certificate program.



AUDITION INFORMATION AND REQUIREMENTS

Students should apply for acceptance to Schenectady County Community College through the Office of Admissions. The music entrance audition must be scheduled directly with the School of Music. Auditions may be scheduled by calling (518) 381-1231 ext 2, emailing cossarla@sunysccc.edu or by writing to:

School of Music
Schenectady County Community College
78 Washington Avenue
Schenectady, NY 12305

Interested students and parents may also make an appointment with a Music faculty member to discuss the audition process, preparation and SCCC's Music program offerings at that time.

ALL AUDITIONS INCLUDE:

- Performance of prepared solo on the major instrument or in voice.
- Sight reading for the major instrument
- Sight singing and rhythmic reading
- Ear training: melodic intervals and simple chord quality recognition
- Pitch matching and singbacks

Instrumentalists – (Bowed Strings, Woodwinds, Brass & Piano)

Choice of Solo Material

The prepared solo should be comparable to level 4, 5, or 6 as detailed in the *New York State School Music Association (NYSSMA)* manual. Contact the School of Music for suggestions or help selecting a solo. A single solo selection is usually adequate to demonstrate ability in the chosen performance area. The applicant may wish, however, to select an additional work to illustrate competence in a contrasting style.

Instrumentalists will be asked to demonstrate knowledge of major scales.

Vocalists

Two classical selections are required, once of which must be in a foreign language. Musical theater (Broadway) selections are not acceptable.

A piano accompanist will be available **if requested 3 weeks in advance and music provided**. The applicant, however, is welcome to bring an accompanist. There is a \$25 fee for piano accompaniment payable at the time of audition. Piano accompaniment is required for vocalists only.

Guitarists

Guitarists should request the *SCCC Guitar Information* handout for specific audition requirements. A copy is found on pages 6 and 7 in this handbook.

Percussionists

Must demonstrate ability in the following areas:

1. Marimba/Keyboard Percussion

- The performance of a marimba solo or etude is required. Solos from Level 3 to Level 6 of the NYSSMA manual are acceptable.
- Two-octave (ascending/descending) major scales and arpeggios in the keys of C, G, D, B-flat and E-flat.
- Sight-reading exercises at NYSSMA manual Levels 1 and 2

And one of the following:

2. Snare Drum/Multiple Percussion

The performance of a snare drum or multiple percussion solo (or etude) is required. Multiple percussion pieces should include the use of snare drum. Solos from Level 4 to Level 6 of the *New York State School Music Association (NYSSMA)* manual are acceptable.

Or

3. Timpani

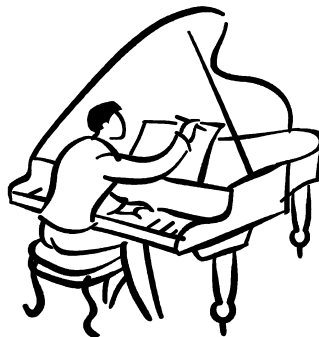
The performance of a timpani solo or etude is required. Solos from Level 3 to Level 6 of the NYSSMA manual are acceptable.



EAR TRAINING AND SIGHT SINGING PREPARATION

An important part of music audition process is the evaluation of the student's competence in the area of Aural Skills, sometimes termed Ear Training and Sight Singing or Aural Theory. In all cases, the auditionee will be asked to demonstrate his or her ability to comprehend musical information; the student will be required to respond to a listening exercise and/or perform from music notation. The auditionee should be familiar with the following types of testing procedures.

1. Pitch Matching – The student will be asked to vocally reproduce a given pitch played at the piano. We are looking for accuracy of pitch.
2. Sing Backs – The student will be asked to vocally reproduce short melodic fragments played at the piano. The fragments will begin with three tones and gradually become longer and more tonally ambiguous. We are looking for melodic memory and the ability to maintain a pitch center.
3. Sight Singing – The student will be asked to sing several printed melodies. The student will hear the tonality established at the piano and will be given the first pitch. The melodies include treble, clef, bass clef, step-wise melodic motion and skips in the tonic triad mixed with step-wise motion. A simple minor tune is included. The student may use numbers, solfege or a neutral syllable. We are looking for competent music reading ability, the ability to identify and name simple key signatures, good rhythmic concepts and the ability to maintain a tonal center.
4. Interval Recognition – The student will be asked to identify the size (number) and quality of all major, minor and perfect intervals played at the piano. No compound intervals will be played. All intervals will be played ascending and melodically. We are looking for the ability to name intervals with relative ease.
5. Triad Recognition/Chord Quality – The student will be asked to identify the quality of chords played at the piano. All chords will be major, minor, diminished or augmented triads. All examples will be in the root position, closed position and played harmonically. We are looking for the ability to name these chords with relative ease.
6. Rhythm – The student will be asked to tap, clap or speak several printed rhythms. The rhythms include simple and compound meters. It is important that the student is able to conceptualize 6/8 as a compound meter. Simple syncopations and dotted rhythms will be included. We are looking for an awareness of pulse as it relates to rhythm and a basic rhythmic vocabulary.



PROGRAM AUDITION REQUIREMENTS FOR GUITAR

Students have the option of auditioning on classical or pick style guitar.

Guitar students are urged to consult with members of the music faculty regarding their career goals and transfer options for pick-style and classical guitar.

Pick Style

Repertoire: **Two** prepared solos from the following pieces:

Etude No.1 p.20 and *First Solo*, pg. 23, William G. Leavitt, A Modern Method For Guitar, Volume 1, Berklee Series, Berklee Publications, distributed by Hal Leonard Publishing, Boston, 1966.

Chords: Execution of the following chords: Major: C, D, E, F, G, A and Minor: a, d, e

Scales: Execution of the following scales: First Position major scales: C, D, G, E, A
First Position minor scales: a, b, d, e

Sight Reading: Diatonic melodies in first position using eighth notes.

Classical

Repertoire: **Two** prepared solos from the classical guitar repertoire. Selections should be a level comparable to those found in Chapters 16-22 of Solo Guitar Playing, Book I, Second Edition, by Fred Noad, New York: Schirmer, 1968

Right Hand Arpeggios: Pieces or etudes which contain at least four consecutive repetitions of each of the following right hand arpeggios: **pima** and **pami** (p = thumb, I = index finger, m = middle finger, and a = ring finger).

Scales: The applicant must be able to play the following scales in first position.
Major: C, G, D, A, E and Minor: a, e, d, b.

The scales must be played by alternating the index and middle fingers of the right hand.

Sight Reading: Diatonic melodies in first position using eighth notes.

All auditions include: Sight singing, rhythmic reading, ear training (melodic intervals and triad recognition), pitch matching and singbacks.

DEGREE PROGRAM AUDITION REQUIREMENT FOR BASS

*(Students have the option of auditioning on double bass **or** electric bass.)*

Double Bass

Prepared solo: The prepared solo should be comparable to a level Four, Five or Six Classical solo as detailed in the *New York State School Music Association (NYSSMA) Manual*. Selection must be played with a bow. Contact the Department of Music for suggestions or help selecting a solo.

Also: The auditionee should perform a blues song using a walking bass line.

Sight Reading: Diatonic melodies using eighth notes.

Electric Bass Guitar

Prepared solo: The prepared solo should be the fast movement of a Baroque or Classical Sonata comparable to level Four, Five, or Six as detailed in the *New York State School Music Association (NYSSMA) Manual*.

Also: The auditionee should perform a blues song using a walking bass line.

Sight Reading: Diatonic melodies using eighth notes.

All auditions include: Sight singing, rhythmic reading, ear training (melodic intervals and triad recognition), pitch matching and singbacks.

MUSICAN'S HEALTH

The SCCC School of Music is committed to promoting healthy practices for music students and faculty. These practices include posture, voice health, breathing, and musculoskeletal awareness. All students and faculty are urged to visit the websites below for further information.

www.musicianshealth.com

www.musiciansway.com/wellness.shtml

PRIVATE LESSONS: PERFORMANCE CONCENTRATION

Students in all SCCC music curricula may take private lessons. The School offers lessons in orchestral instruments (woodwind, brass, strings, percussion), classical voice, piano, organ, guitar (classical or pick-style), and double or electric bass. The School of Music assigns private lesson instructors.

Students enrolled in either degree enroll in lessons as *Performance Concentration I-IV (MUS 163, 164, 263, 264)*. Certificate students enroll in lessons as *Applied Music I-II MUS 135, 136*. All lessons are weekly.

Performance Concentration

Degree students enrolled in Performance Concentration attend a weekly lesson with their instructor. In addition students are required to attend a weekly *Studio Division Performance Class*, according to their performance area. All students are required to perform periodically in class. *Students should consult their Performance Class instructor for further information regarding class performance requirements.*

Students who must cancel a lesson due to illness or other circumstances are responsible to contact their instructor. Make-up lessons for student cancellations are given at the discretion of the instructor.

All students enrolled in Performance Concentration take an annual performance examination during the final exam period of the spring semester.

A copy of the Performance / Recital Class Syllabus is on the following page.

Applied Music

Students enrolled in Applied Music attend weekly lessons with a private instructor. Applied Music instructors are assigned by the School of Music.

Degree students may elect Applied Music lessons in a secondary instrument or voice as an elective during their second year of their study. A maximum of two semesters of Applied Music in a secondary instrument or voice may be used to satisfy music degree requirements.



SCHENECTADY COUNTY COMMUNITY COLLEGE, DEPARTMENT OF MUSIC

PERFORMANCE CONCENTRATION
MUS 163, 164, 263, 264

PERFORMANCE/RECITAL CLASS SYLLABUS
Fall 2013

Division Instructors/Classrooms for Performance Classes are:

Guitar	Mr. Isachsen	School of Music 215
Woodwinds & Bowed Strings	Dr. Hosmer	School of Music 119
Voice	Dr. Wu	School of Music 131
Brass and Percussion	Dr. Keyser	School of Music 139
Piano	Mr. Evans	Auditorium

Objectives: Performance Concentration is designed to develop the student's performance and teaching skills to the highest possible level. The student will study techniques appropriate to the individual's instrument or voice with a private studio instructor. Practical experience in performance and critical analysis will be emphasized in the weekly Performance Classes with division instructors. Practical experience in formal performance will be provided by the Division Recital.

Required Materials: The acquisition of assigned music is the responsibility of each student. Each student is expected to have at his or her disposal an appropriate instrument and to maintain that instrument in excellent working order. Have it checked at least twice a year by a competent repairperson. It is highly recommended that you obtain insurance for your instrument(s). Each student is responsible for maintaining appropriate reeds, mallets, mutes, strings, etc. as required by his/her studio instructor. All students must own and operate a metronome. A tuner may be required for many students. Students must be prepared to take notes at all studio lessons and performance classes. Studio instructors and division instructors may require additional materials where necessary.

Classes:

1. Each student will be required to meet once a week with his/her studio instructor for a fifty-minute private lesson. It is the responsibility of the student to arrange this meeting time at the convenience of the studio instructor.
2. Each student will be required to meet on Wednesdays at 12:30 p.m. for Performance Class with the division instructor. Performance Classes will be divided into five divisions. The instructor of each division will arrange scheduling procedures for that division's Performance Class. Performance Classes are open to students registered in MUS 163-164/263-264 and certificate students only.
3. Each student is required to attend his/her own division recital. Each student is required to attend nine additional concerts.
4. The studio instructor may require additional concert attendance and/or lesson observation.

Division Recital: Each division will be afforded a date and time for a recital in which the individual students will perform solo literature. Students in their first semester of Performance Concentration may be required to perform in one Division Recital at the discretion of their studio and division instructors. All other students in Performance Concentration will be required to perform in one Division Recital.

Division Recitals for Fall 2013 are:

Voice I	Monday, Nov. 18, 11:30, Auditorium
Guitar I	Wednesday, Nov. 20, 11:30, Auditorium
Guitar II	Monday, Nov. 25, 11:30, Auditorium
Brass	Monday, Dec. 2, 11:30, Auditorium
Voice II	Wednesday, Dec. 4, 11:30, Auditorium
Woodwinds	Monday, Dec. 9, 11:30, Auditorium
Piano	Wednesday, Dec 11, 11:30, Auditorium
Bowed Strings & Percussion	Wednesday, Dec. 11 12:30, Auditorium

1. An application for each performance must be submitted to the music office by Nov. 6. Failure to do so will result in the assignment of an F for the course.
2. Each application must be approved and signed by the student's Studio Instructor.
3. Each application must be approved and signed by the student's Division Instructor.
4. If a composition includes an accompaniment, the accompaniment must be performed.
5. Students are strongly encouraged to perform a work in Performance Class before they perform that work in a Division Recital.
6. Division Recitals are open to the public.
7. Programs will be printed for each Division Recital.
8. Division Recital attire must be appropriate for a concert performance. Students may be prohibited from performing if dressed inappropriately.
9. Division Instructors may announce additional requirements as needed.
10. Failure to perform in a Division Recital will result in a grade of "I" for incomplete only if the student has properly scheduled his/her performance and met all other requirements of Performance Concentration.
11. At the discretion of their studio and division instructors, students in their first semester of Performance Concentration may not be required to perform in a Division Recital. In these instances additional compulsory performance activities will be assigned.

Performance requirements: Each student will be required to perform at least twice in Performance Class (Accompaniment is not necessary unless required by the instructor.) and once in a Division Recital (with the possible exception of some students in their first semester of Performance Concentration). Piano and organ concentration students are required to perform a minimum of two accompaniments per semester. At least one of these accompaniments must be in a Division Recital. All accompanists must be SCCC staff members or piano/organ concentration students. Division instructors may assign additional performance requirements.

Performance Examinations: A final performance examination is required and will be administered by a faculty panel at the conclusion of MUS 164 and MUS 264. Failure to perform a performance examination will result in a grade of "F" for the spring semester for Performance Concentration (MUS 164 and MUS 264). Performance examinations will consist of materials and techniques studied during the course of the academic year. Studio and Division instructors will assist the student in determining more specific requirements appropriate to his/her instrument. This performance

examination is the final exam for MUS 164 and MUS 264 and will count as **15% of your final grade** in the spring semester.

Attendance: Attendance is required. This course includes sixteen meetings: fifteen (15) Performance Classes and the student's division recital(s). In some semesters, Division Recitals may be held during the Wednesday Performance Class meeting time. If a division has two separate recitals, students in that division must attend both recitals. **More than three absences from the Wednesday class will result in a one letter grade reduction of the final grade for Performance Concentration. Two tardies are equivalent to one absence.**

Concert attendance: In addition to the sixteen required meetings described above, students are required to attend ten of the many performances given at SCCC over the course of the semester. The ten required concerts may include a maximum of three in which you perform including your own division recital. Off-campus performances by SCCC ensembles will count if you turn in a concert program, signed by the ensemble director the class day after the performance. (Turn in program to Dr. Wu.) A list of college hour, evening, and weekend performances will be posted in the music office.

There will be an attendance sign-in sheet at each on-campus performance. Students must sign next to their names in order to receive credit. The only exceptions are large ensemble concerts in which the student performs. Students must sign in at their own division recital. Sign-in sheets will be removed two minutes before the concert begins. Late comers will not be given credit for attending. Signing a sign-in sheet and not attending a concert or signing for another student will be considered academic dishonesty and will be dealt with as such (see the SCCC Academic Code 6.2 *Consequences of Violating Academic Integrity*). Off campus performances by current SCCC Music Department Faculty are also acceptable provided you turn in a concert program, signed by the faculty member, the class day after the performance. Concert attendance counts as 10% of your final grade.

10 performances no reduction

7-9 performances 1 reduction (B becomes B-)

4-6 performances 2 reductions (B becomes C+)

0-3 performances 3 reductions (B becomes C)

Grading: Lesson grades are determined by Studio Instructors and Division Instructors and are based on many different factors of the student's performance during the semester but will invariably include the following:

1. Improvement.
2. Preparation.
3. Musical performance at lessons, master classes, Performance Classes, Division Recitals, and performance examinations.
4. Attendance at lessons.
5. Attendance at Performance Classes
6. Attendance at Division Recitals and other concerts.
7. Performance Examination grade (determined by a panel of faculty members, Spring semester only)

Students with Disabilities: If you have a disability that may affect your performance in this course and are seeking accommodations, it is your responsibility to submit the required documentation to the Disabled Student Services Office (Elston Hall Room 222, 381-1345). Instructors will provide necessary accommodations based on the document supported recommendations of Disabled Student Services.

Accompanists: All accompanists must be SCCC students or SCCC staff accompanists. It is each student's responsibility to arrange for an accompanist if required. Piano and organ concentration students are required to perform a minimum of two accompaniments per semester. These students will provide the best opportunity for more frequent rehearsals. In the event that a student is unable to accompany you, the College has two staff accompanists available. Again, it is your responsibility to contact accompanists; however, Mr. Evans can assist you in this. Please make music available to accompanists as soon as you and your studio teacher have selected repertoire. **The deadline for delivering music to accompanists is four weeks before the first scheduled Division Recital (October 21). You are in danger of failing the course if the accompanist is not in possession of your music by this deadline.**

Staff Accompanists:

Vocal: Arla Wilding 374-0613

Instrumental: Patricia Keyes 229-0439

PERFORMANCE CONCENTRATION: DIVISION RECITALS

All students enrolled in Performance Concentration are required to perform in a Division Recital each semester. The School of Music schedules division recitals. Dates and times are posted on bulletin boards and announced in class. Students must complete a Division Recital form and return it their Division instructor.

All students enrolled in Performance Concentration are required to attend a minimum of two additional division recitals each semester.

NOTE: Audio or video recording of SCCC recitals and concerts is strictly prohibited. The college records all performance for review by students and instructors.

The easiest way for students to complete the Division Recital form:

- I. Pick up a form from the School of Music Office (Room 201) or use the one on page 14, and write in your information. Then...
- II. Go to the Computer MIDI Lab (School of Music Room 147) during lab hours. There are templates on the computer desktop called "*Division Recital Forms*" and directions are posted on the wall. Type the information onto the form. Print the form but do not save it onto the lab computer.
- III. Draw a stage set-up diagram on the bottom.
- IV. Get your instructor to review it and sign it.
- V. Turn the form in to your division instructor by the due date.

A copy of the Recital Class form is on the following page.



MUS 163 – 164/263 – 264 Performance Concentration

Division Recital Form*

Please type all information.

Incomplete forms will not be accepted.

Student Name: _____ Today's Date: _____

Instrument or voice class: _____ Performance Date: _____

Title (include movement and all identifying numbers.)

Composer's complete name: _____

Name of pianist: _____ Approximate length: _____

Equipment needed (including chairs, stands and piano):

Other information: _____

*This form must be completed and returned to your division instructor by the date stated in the syllabus.

Student's Signature: _____

Instructor's Signature: _____

(Instructor, please review all information before signing.)

Approval: _____

Please indicate stage set-up

STUDENT RECITAL GUIDELINES

Students, with permission of the School of Music, may give solo or shared public recitals. All student recitals must follow guidelines specified below:

1. All recitals must be formally approved by the School of Music.
2. Recitals are to be presented during a student's final semester before graduation.
3. A student must have a minimum 3.0 GPA to be eligible for a recital.
4. Students must enroll in **MUS 272 Recital** for credit.
5. Students are responsible for securing and paying accompanists, as well as any other expenses associated with the recital.
6. All recital literature must be approved by the studio teacher.
7. Students are responsible for a written program in correct style.
8. Students are responsible for scheduling the recital room, normally School of Music Room 215. Student's recitals are not presented in the Taylor Auditorium.
9. Students considering a recital should enroll in **MUS 270 Studio Literature** during the previous semester.



PERFORMANCE CONCENTRATION: ANNUAL PERFORMANCE EXAMINATION

All students enrolled in Performance Concentration are required to perform an Annual Performance Examination. Performance Examinations are given during the Final Exam period each spring term. Students should consult their private and division instructors for further information on Performance Examination requirements. Students must submit an Annual Performance Examination form which lists all material completed since the last performance examination taken. This form can be picked up in the School of Music office or completed in the Computer MIDI Lab during lab hours.

VOICE CONCENTRATION

Students with concentration in Voice Performance should expect to demonstrate progress in the fundamentals of singing (posture, breath management, phonation, resonance, articulation, diction), in musicianship (rhythm, intonation, etc.), in presentation, and in musicality.

Songs for the annual Performance Examination will be selected by the student's instructor from songs studied by the student that year. At examination, the student will select the first song to be performed. The faculty panel will then ask for performance of one of the other songs prepared.

First Year Performance Examination Requirements

The student must prepare four songs for performance from memory. One language other than English must be included. Repertoire should be comparable to songs found in *Twenty-six Italian songs and Arias*, ed. John Patton, *Folksong Arrangements*, Benjamin Britten, *Old American Songs*, arr. Aaron Copland. Repertoire could be more advanced, if desired by instructor.

Second Year Performance Examination Requirements

The student must prepare six songs for performance from memory. The six songs must include at least one song in a language other than English. (Arias from oratorios may be performed without memorization.) Suggestions for repertoire include compositions by Henry Purcell, Georg Friedrich Handel, Wolfgang Amadeus Mozart, Franz Schubert, Johannes Brahms, Richard Strauss, John Duke and Samuel Barber, as well as selected arias found in volumes of the *G. Schirmer Opera Anthology*, ed. Robert L. Larsen and volumes of the *Anthology of Sacred Songs: Celebrated Arias Selected from Oratorios*, ed. by Max Spicker.

INSTRUMENT CONCENTRATIONS

Specific performance examination requirements are published in the *Annual Performance Examination Requirements* document supplied to lesson instructors. Each instructor will provide a copy of the individual instrument requirements specified in the document to their students.

SCCC ENSEMBLES

The SCCC School of Music offers the following ensembles:

WIND ENSEMBLE: The SCCC Wind Ensemble performs a variety of traditional and contemporary and traditional works for wind ensemble or concert band. Membership is by audition or permission of the Wind Ensemble Director.

JAZZ ENSEMBLE: The SCCC Jazz Ensemble performs music for big band. Instrumentation includes trumpets, trombones, saxophones, piano, bass, guitar, and drum set. Membership is by audition.

CHORUS: The SCCC Chorus performs large-scale vocal works. Membership is open to any SCCC college student interested in singing.

VOCAL CHAMBER ENSEMBLE: The SCCC Vocal Chamber Ensemble is a small select chorus that performs vocal music from all eras. Membership is by audition.

GUITAR ENSEMBLE: The SCCC Guitar Ensemble performs music for a variety of chamber ensembles, as well as large group works. The ensemble performs both classical and pick-style guitar literature. Membership is by audition or permission of the Director.

PERCUSSION ENSEMBLE: The SCCC Percussion Ensemble performs a variety of works for multiple percussion. Membership is by permission of the Director.

CHAMBER WINDS ENSEMBLES: The SCCC Chamber Winds perform music for a variety of woodwind chamber ensemble combinations of single and double-reed instruments and flutes. Membership is by permission of the Director.

Other ensembles may be offered at the discretion of the School of Music.



ENSEMBLE REQUIREMENTS FOR DEGREE STUDENTS

All A.S. and A.A.S. students must complete a minimum ensemble requirement after entrance into the degree programs. Ensembles taken while enrolled the Music Certificate program may not be used to satisfy this requirement.

Ensemble Requirements

Brass and Woodwind Students: four semesters of Wind Ensemble

Percussion Students: a minimum of two semesters each of Wind and Percussion Ensemble

Voice Students: four semesters of Chorus

Piano/Keyboard Students: four semesters of Chorus

Guitar/Electric Bass Students: four semesters of Guitar Ensemble

Bowed Strings: four semester of an on-campus or approved off-campus ensemble

Additional ensembles may be taken as elective credits. A maximum of two additional ensembles may be used to satisfy degree graduation requirements.

Ensemble Attire

Ensemble directors determine the appropriate attire for SCCC ensembles. All ensemble members are expected to adhere to the attire requirements of individual ensemble directors. The following items are not appropriate concert attire: tennis shoes, t-shirts, jeans, shorts etc.

SCCC Instruments

The College owns a number of instruments that may be used by students at the discretion of the Department. Students using school instruments must sign a form confirming their responsibility for the instrument in case of theft or damage beyond normal wear.

Practice Rooms

Practice rooms are available for student use during regular college hours. Students may not reserve or hold a room not in use. Students are urged to not leave any times unattended in the practice rooms. School instruments left unattended will be confiscated! **No food or drink is allowed in any practice rooms.**

Lockers

Instrument storage lockers are available to music students. Lockers are assigned according to primary instrument size. Voice majors may obtain a small locker if one is available. Students should see the Department Secretary School of Music Room 201 in order to obtain a locker.

Students are encouraged not to leave instruments and other valuables in lockers overnight.

Lockers must be cleaned out by the end of the spring final exam period, after which the combinations will be changed.

MIDI/COMPUTER MUSIC LAB

The Department maintains a five-station computer lab for student use in room 147. The computers may be used at any time when the lab is open. Lab hours are 8:30 a.m. to 3:30 p.m. Monday through Friday.

The computers may be used for classroom writing and listening assignments. Any abuse of equipment will result in immediate suspension of lab privileges. Students are strongly encouraged to bring their own headsets. There will be a few in the office (Room 201) for loan. These must be signed out and later returned to the office.

Computer software includes word processing (Microsoft Word), and music notation software (Sibelius). Students in Theory class may also use the Finale disc that comes with the text workbook.

Computers may not be used for illegal copying of copyrighted recordings or other materials. Students found making illegal copies will have computer privileges terminated.

Templates on the computers can be used by students to fill out the two required forms: the Division Recital form and the Annual Performance Examination form.

PIANO LAB

The Piano Lab in room 149 is available to piano students who are looking for extra practice time. A student monitor will be available to answer questions about the equipment. Headsets must be worn at all times. Check the door for a sign indicating the days and hours it is open.



SCHOOL OF MUSIC – STAFF DIRECTORY

Schenectady County Community College
School of Music
78 Washington Ave
Schenectady, NY 12305

Dr. William Meckley, Dean	School of Music Room 202 (in Room 201) (518) 381-1231 ext 3 mecklewa@sunysccc.edu
Laura Cossart, Secretary	School of Music Room 201 (518) 381-1231 ext 2 cossarla@sunysccc.edu
Dr. Karen Hosmer, Assistant Professor	School of Music Room 203 (518) 381-1231 ext 4 hosmerke@sunysccc.edu
Dr. Allyson Keyser, Assistant Professor	School of Music Room 103 (518) 381-1231 ext 5 keyserab@sunysccc.edu
Brett Wery, Professor	School of Music Room 105 (518) 381-1231 ext 6 werybl@sunysccc.edu
Dr. Yiping Wu, Associate Professor	School of Music Room 205 (518) 381-1231 ext 7 wuy@sunysccc.edu

Message for adjunct faculty may be left in mailboxes in
School of Music Room 207, from 8am-4pm



SCHENECTADY COUNTY COMMUNITY COLLEGE
CURRICULUM WORKSHEET

PROGRAM: PERFORMING ARTS: MUSIC (A.S.)

HEGIS # 5610

SCCC Program Code # 87

Program Entry Date:

Student Name:

Former College(s) Attended:

SCCC ID Number:

PROGRAM REQUIREMENTS	CR	GRADE	TRANSFER	COMMENTS
ENG 123 College Composition	3			Basic Communication
ENG 124 Introduction to Literature	3			Humanities
HIS 125 Western Civilization to 1715 OR HIS 127 Western Civilization Since 1715	3			Western Civilization
MUS 151 Theory I	2			
MUS 152 Theory II	2			
MUS 155 Aural Skills I	1			
MUS 156 Aural Skills II	1			
MUS 157 Conducting I	1			
MUS 158 Conducting II	1			
MUS 161 Performance Organization I (a)	1			
MUS 162 Performance Organization II (a)	1			
MUS 163 Performance Concentration I	2			
MUS 164 Performance Concentration II	2			
MUS 251 Theory III	2			
MUS 252 Theory IV	2			
MUS 255 Aural Skills III	1			
MUS 256 Aural Skills IV	1			
MUS 257 Literature & Style I	3			Arts
MUS 258 Literature & Style II	3			
MUS 261 Performance Organization III (a)	1			
MUS 262 Performance Organization IV (a)	1			
MUS 263 Performance Concentration III	2			
MUS 264 Performance Concentration IV	2			
MUS 287 Keyboard Techniques I	1			
MUS 288 Keyboard Techniques II	1			
MUS 289 Keyboard Techniques III	1			
MUSIC Restricted Electives *	11			<i>One semester Foreign Language required for voice majors</i>
MUS				
MUS				
MUS				
MUS				
MUS				
MUS				
MAT 145 OR Higher OR Science Elective (b)	3-4			Mathematics
MAT 145 OR Higher OR Science Elective (b)	3-4			Natural Sciences
Social Science Elective	3			Social Sciences
Minimum Credit Hours	64			

Additional Comments: Please refer to the footnotes on the reverse side.

***One semester Foreign Language required for voice majors.** Voice majors **only** may meet the foreign language requirement by taking one semester of a foreign language as a second year elective. Italian is strongly recommended.

Reviewed by _____

Date _____

PERFORMING ARTS: MUSIC

ASSOCIATE IN SCIENCE

FIRST YEAR

<u>Fall Semester</u>			<u>CR</u>	<u>Spring Semester</u>			<u>CR</u>
ENG	123	College Composition	3	ENG	124	Introduction to Literature	3
MUS	161	Performance Organization I (a)	1	MUS	162	Performance Organization II (a)	1
MUS	163	Performance Concentration I	2	MUS	164	Performance Concentration II	2
		Math 145 OR higher OR Science Elective (b)	3-4			Math 145 OR higher OR Science Elective (b)	3-4
		Basic Musicianship I:				Basic Musicianship II:	
		MUS 151 Theory I	2			MUS 152 Theory II	2
		MUS 155 Aural Skills I	1			MUS 156 Aural Skills II	1
		MUS 257 Literature & Style I	3			MUS 258 Literature & Style II	3
MUS	287	Keyboard Techniques I	1	MUS	288	Keyboard Techniques II	1
			<u>16-17</u>			Restricted Music Elective	<u>1</u>
							<u>17-18</u>

SECOND YEAR

<u>Fall Semester</u>			<u>CR</u>	<u>Spring Semester</u>			<u>CR</u>
HIS	125	Western Civilization to 1715 OR		MUS	262	Performance Organization IV (a)	1
		HIS 127 West. Civ. Since 1715	3	MUS	264	Performance Concentration IV	2
MUS	261	Performance Organization III (a)	1			Social Science Elective	3
MUS	263	Performance Concentration III	2			Basic Musicianship IV:	
MUS	289	Keyboard Techniques III	1			MUS 158 Conducting II	1
		Basic Musicianship III:				MUS 252 Theory IV	2
		MUS 157 Conducting I	1			MUS 256 Aural Skills IV	1
		MUS 251 Theory III	2			Restricted Music Electives	<u>5</u>
		MUS 255 Aural Skills III	1				<u>15</u>
		Restricted Music Electives	<u>5</u>				
			<u>16</u>				

Minimum credit hours required for degree: 64

NOTES:

(a) Performance Organization I-IV (MUS 161, 162, 261, 262) are required as follows:

- X All Brass and Woodwind Concentrations will complete four semesters of Wind Ensemble.
- X All Percussion Concentrations will complete a minimum of two semesters of Percussion Ensemble and two semesters of Wind Ensemble.
- X All Organ, Piano, and Vocal Concentrations will complete four semesters of Chorus.
- X All Guitar Concentrations will complete four semesters of Guitar Ensemble.
- X All String Concentrations will complete four semesters of SCCC or off-campus ensembles with appropriate registration, as advised by the Department.
- X All students enrolled in Performance Concentration (MUS 163, 164, 263, 264) are required to also be enrolled in the appropriate major ensemble.

(b) Strongly advised: one semester of mathematics and one of science course work.

PERFORMING ARTS: MUSIC

ASSOCIATE IN SCIENCE

Restricted Electives:

First Year*: (Select 1 credit from Restricted Electives)

	<u>CR</u>
MUS 167 Percussion Tech	1
MUS 168 Vocal Techniques	1
MUS 169 Guitar Techniques	1
MUS 110 Lab Ensemble I	1
MUS 112 Music Notation Software Basics	1
MUS 108 Jazz Harmony and Accompaniment I	1
MUS 180 Introduction to Music Therapy	1
MUS 162 additional Performance Organization (A maximum of two additional Performance Organization courses may be used as credit toward fulfilling degree requirements)	1

*First year restricted elective may be taken either fall or spring semester.

Second Year: **Fall** (Select 5 credits from Restricted Electives)

MUS 115 Rock Music: Style and Development	3
MUS 131 African American Music Survey	3
MUS 135/136 Applied Music I or II (Secondary instrument or voice, two semesters maximum towards graduation requirements.)	2
MUS 283 Music in Contemporary Education I	3
MUS 285 Brass Techniques	2
MUS 127 Jazz Styles and Development	3
MUS 232 Jazz Improvisation I	2
MUS 270 Studio Literature	1
MUS 180 Introduction to Music Therapy	1
MUS 162 additional Performance Organization	1
Foreign Language (vocal concentrations only)	3
First year electives	1

Spring (Select 5 credits from Restricted Electives)

MUS 115 Rock Music: Style and Development	3
MUS 135/136, Applied Music I or II (Secondary instrument or voice, two semesters maximum towards graduation requirements.)	2
MUS 284 Music in Contemporary Education II	3
MUS 286 Woodwind Techniques	2
MUS 231 Music Business	3
MUS 233 Basic Arranging	2
MUS 234 Jazz Improvisation II	2
MUS 272 Recital	1
MUS 180 Introduction to Music Therapy	1
MUS 162 additional Performance Organization	1
Foreign Language (vocal concentrations only)*	3
First year electives	1

*One semester of a foreign language is required for voice concentration majors. A maximum of three credits can be applied toward degree.

Additional Advisement Notes:

1. Students planning on transfer to Music Education Baccalaureate programs are strongly advised to take the following sequence of restricted electives. One Special Techniques (MUS 167, 168 or 169), MUS 283, MUS 284, MUS 285, MUSIC 286.
2. Students interested in jazz and commercial music study should consider the following restricted electives:
MUS 110-111, MUS 127, MUS 231, MUS 232, MUS 233, MUS 234

Year 2013-2014
SCHENECTADY COUNTY COMMUNITY COLLEGE
CURRICULUM WORKSHEET

PROGRAM: MUSIC/BUSINESS (A.A.S.)
 HEGIS # 5004 SCCC Program Code # 16 Program Entry Date:
 Student Name: Former College(s) Attended:
 SCCC ID Number:

PROGRAM REQUIREMENTS	CR	GRADE	IN PROGRESS	COMMENTS
MGT 123 Introduction to Business	3			
ENG 123 College Composition	3			
ENG 124 Intro to Literature	3			
MUS 231 Music Business I	3			
MUS 235 Music Business II	3			
MUS 151 Theory I	2			
MUS 152 Theory II	2			
MUS 155 Aural Skills I	1			
MUS 156 Aural Skills II	1			
MUS 161 Performance Organization I (a)	1			
MUS 162 Performance Organization II (a)	1			
MUS 163 Performance Concentration I	2			
MUS 164 Performance Concentration II	2			
MUS 178 Audio Recording I	3			
MUS 179 Audio Recording II	3			
MUS 278 Audio Recording III	3			
MUS 230 Live Sound Reinforcement	3			
MUS 280 Music Business Internship	3			
MUS 121 Enjoyment of Music	3			
MUS 115 Rock Music Style and Development OR	3			
MUS 127 Jazz Styles and Development				
MUS 287 Keyboard Techniques I	1			
MUS 261 Performance Organization III (a)	1			
MUS 262 Performance Organization IV (a)	1			
Math Elective	3			
Science Elective	3			
Social Science Elective	3			
Minimum Credit Hours	60			

Additional Comments: Please refer to the footnotes on the reverse side.

Reviewed by _____
 Date _____

MUSIC BUSINESS
ASSOCIATE IN APPLIED SCIENCE

FIRST YEAR

Fall Semester	CR	Spring Semester	CR
ENG 123 College Composition	3	ENG 124 Introduction to Literature	3
MUS 178 Audio Recording I	3	MUS 162 Performance Organization II (a)	1
MUS 161 Performance Organization I (a)	1	MUS 164 Performance Concentration II	2
MUS 163 Performance Concentration I	2		
		Basic Musicianship I:	
		MUS 151 Theory I	2
		MUS 155 Aural Skills I	1
MUS 121 Enjoyment of Music	3	MUS 115 Rock Music Style and Development	3
MUS 287 Keyboard Techniques I	1	OR	
	16	MUS 127 Jazz Styles and Development	
		MUS 179 Audio Recording II	3
			15

SECOND YEAR

Fall Semester	CR	Spring Semester	CR
MGT 123 Introduction to Business	3	MUS 280 Music Business Internship	3
MUS 261 Performance Organization III (a)	1	MUS 235 Music Business II	3
MUS 278 Audio Recording III	3	MUS 262 Performance Organization IV (a)	1
MUS 231 Music Business I	3	Math OR Science Elective	3
MUS 230 Live Sound Reinforcement	3	Social Science Elective	3
Math OR Science Elective	3		13
	16		

Minimum Credit Hours required for degree: 60

NOTES:

- a) Performance Organization I-IV (MUS 161, 162, 261, 262) are required as follows:
- X All Brass and Woodwind Concentrations will complete four semesters of Wind Ensemble.
 - X All Percussion Concentrations will complete a minimum of two semesters of Percussion Ensemble and two semesters of Wind Ensemble.
 - X All Organ, Piano, and Vocal Concentrations will complete four semesters of Chorus.
 - X All Guitar Concentrations will complete four semesters of Guitar Ensemble.
 - X All String Concentrations will complete four semesters of SCCC or off-campus ensembles with appropriate registration, as advised by the Department.

Rev. 2013-03-07

SCHENECTADY COUNTY COMMUNITY COLLEGE
CURRICULUM WORKSHEET

PROGRAM: MUSIC (CERTIFICATE)

HEGIS # 5610

SCCC Program Code # **92**

Program Entry Date:

Student Name:

Former College(s) Attended:

SCCC ID Number:

PROGRAM REQUIREMENTS	CR	GRADE	IN PROGRESS	COMMENTS
ENG 123 College Composition	3			
ENG 124 Intro to Literature	3			
MUS 106 Ear Training & Sight Singing	3			
MUS 121 The Enjoyment of Music	3			
Controlled Electives (a)	3			
MUS 135 Applied Music I	2			
MUS 136 Applied Music II	2			
MUS 147 Music Fundamentals	3			
MUS 181 Beginning Piano*	2			
MUS 182 Intermediate Piano*	2			
Minimum Credit Hours	26			

Additional Comments: Please refer to the footnotes on the reverse side.

Review by _____

Date _____

CERTIFICATE IN MUSIC

Suggested Course Sequence

Fall Semester	CR	Spring Semester	CR
ENG 123 College Composition	3	ENG 124 Introduction to Literature	3
MUS 121 Enjoyment of Music	3	MUS 106 Ear Training & Sight Singing	3
MUS 135 Applied Music I**	2	MUS 136 Applied Music II	2
MUS 147 Music Fundamentals	3	MUS 182 Intermediate Piano*	2
MUS 181 Beginning Piano*	2	Controlled Electives (a)	3
	13		13

Minimum Credit Hours required for certificate: 26

Advisement Note for discussion with a Music advisor:

Students planning to enter A.S. or A.A.S. Music degree programs should consider taking mathematics, science, or social science coursework applicable to the A.S. or A.A.S. program while enrolled in the Music Certificate program. See *Controlled Electives* below.

- (a) **Controlled Electives:** any of the following or combination of the following options can apply.
- i) Completion of Music Certificate program only:
Any combination of one-, two-, or three-credit MUS courses.
 - ii) Preparation for audition in A.S. Performing Arts Music:
MUS 100, MUS231, HIS125, HIS 127, Social Science elective, MAT or Science elective.
 - iii) Preparation for audition in A.A.S. Music/Business:
ACC 121, ACC 123, BUS 121, CIS 121, ECO 221, ECO 223, MGT 123, MGT 127, MUS 231, Social Science elective, MAT or Science elective.
 - iv) SCCC ensembles taken as Certificate elective credits may not be used to satisfy music degree program requirements.

*Students studying piano as their primary instrument in MUS 135 or MUS 136 (Applied Music) may substitute Controlled Electives for MUS 181 and/or MUS 182.

**Voice students without prior training may substitute MUS 171 Voice Class for one semester of Applied Music.

Rev. 03-20-2013

**TRANSFER ARTICULATION AGREEMENT
BETWEEN
SCHENECTADY COUNTY COMMUNITY COLLEGE AND
NAZARETH COLLEGE**

Music Therapy

Students who complete the *Performing Arts: Music* Associate in Science degree from Schenectady County Community College with the electives detailed below and who are accepted at Nazareth College will be afforded full junior status in the Music Therapy baccalaureate program. Students may also elect to transfer in Music Education or as double majors.

Required SCCC Electives required for Nazareth Transfer in Music Therapy

MUSIC	
MUS 180 Introduction to Music Therapy	1 cr.
MUS 167 Percussion Techniques	1 cr.
MUS 169 Guitar Techniques	1 cr.
MUS 285 Brass Techniques	2 cr.
MUS 286 Woodwind Techniques	2 cr.
MUS 171 Voice Class	2 cr.
NONMUSIC	
PSY 121 Psychology	3 cr.

Students who desire transfer in Music Education may omit MUS 180.

Advisement Note:

Students whose schedules permit should take BIO 151 Anatomy and Physiology as their Science elective.

SUNY FREDONIA-SCHENECTADY COMMUNITY COLLEGE ARTICULATION AGREEMENT IN MUSIC

By this agreement, students who complete the Associate of Science in Performing Arts-Music degree at Schenectady Community College and pass the music audition at Fredonia, are guaranteed admission with full junior standing to the School of Music at Fredonia. Students will transfer a minimum of 60 credit hours. [A SCCC transfer student's ability to complete their degree at Fredonia in 2 years is conditional on their passing their audition and placement exams for junior level placement at Fredonia.](#)

Degree Options in the Fredonia School of Music

Bachelor of Music in Music Education

Bachelor of Music in Performance

GPA Criteria: To be guaranteed admission, students must have a cumulative GPA of 2.5 for Music Performance and a 2.75 for Music Education.

SUNY General Education Categories: Students need to complete a minimum of 7/10 SUNY General Education Categories. The SUNY General Education requirements are referred to as the College Core Curriculum (CCC) at SUNY Fredonia. Furthermore:

- 1) Students are required to complete 2 courses, with 2 different prefixes, in the social sciences.
- 2) Students are required to complete 2 courses, with two different prefixes, in the natural sciences.
- 3) The CCC includes a speaking intensive requirement. This will be fulfilled if students complete the basic communication requirement at Schenectady.
- 4) The CCC includes a 6 credit upper-level requirement which must be completed at Fredonia. Students completing their degree in Music Education will be waived from this requirement.